



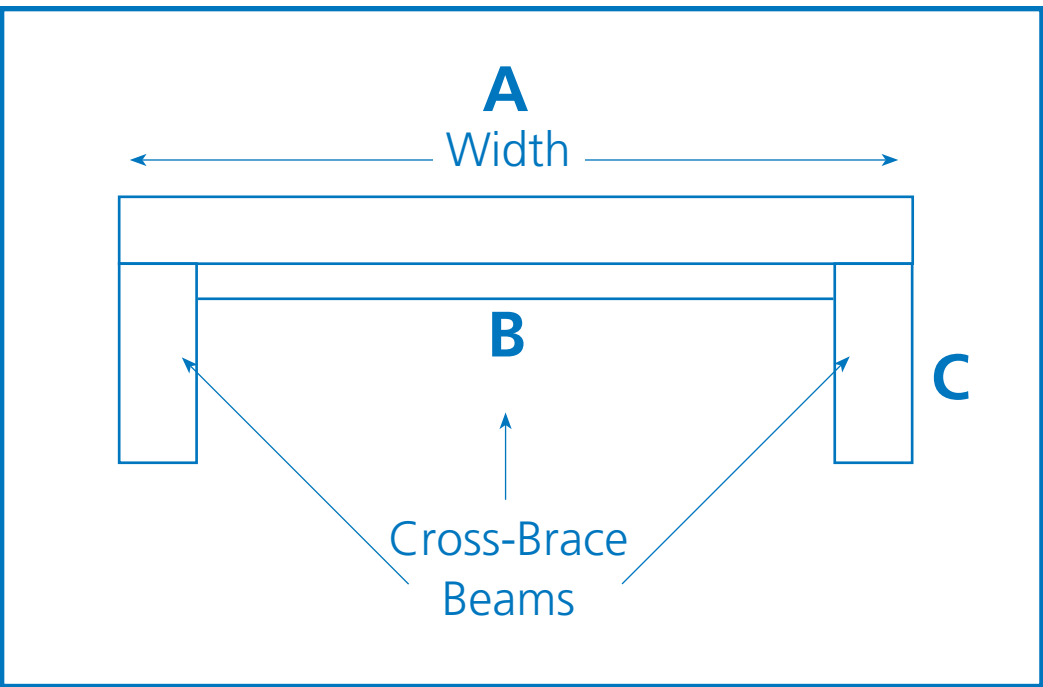
# Doghouse Plans

Unlike many store-bought doghouses, PETA's doghouses protect dogs from the elements in winter and summer. The broad, sloped roof shields the dogs from rain and snow, and the overhang provides a shady resting place when the sun is beating down.

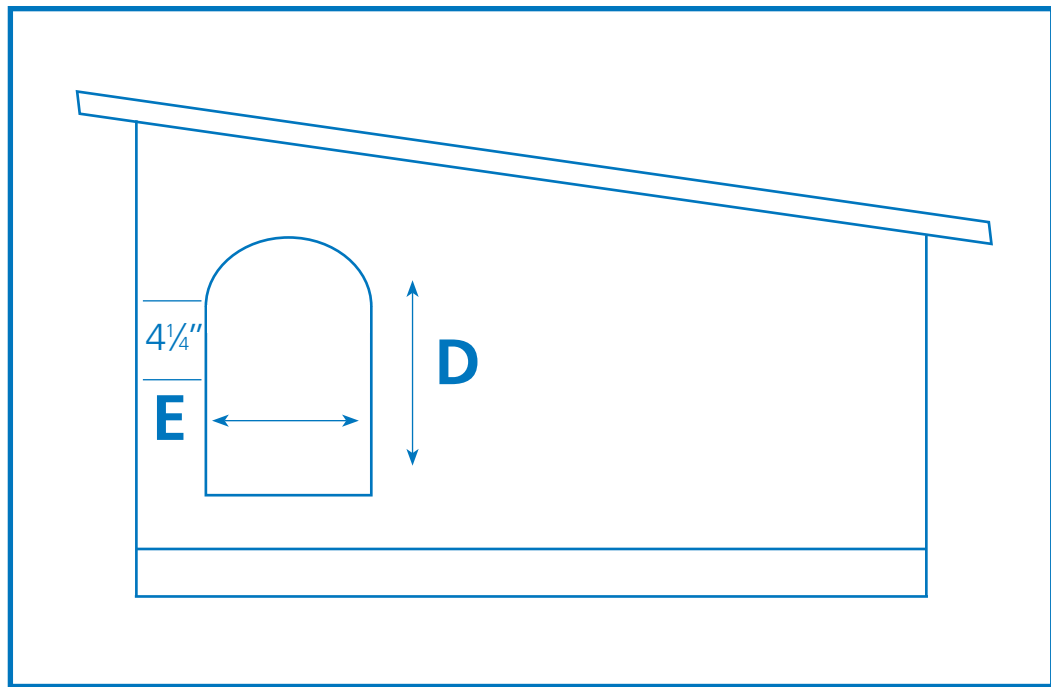
## Measurements

(Note: Use only nontoxic, arsenic-free, pressure-treated lumber.)

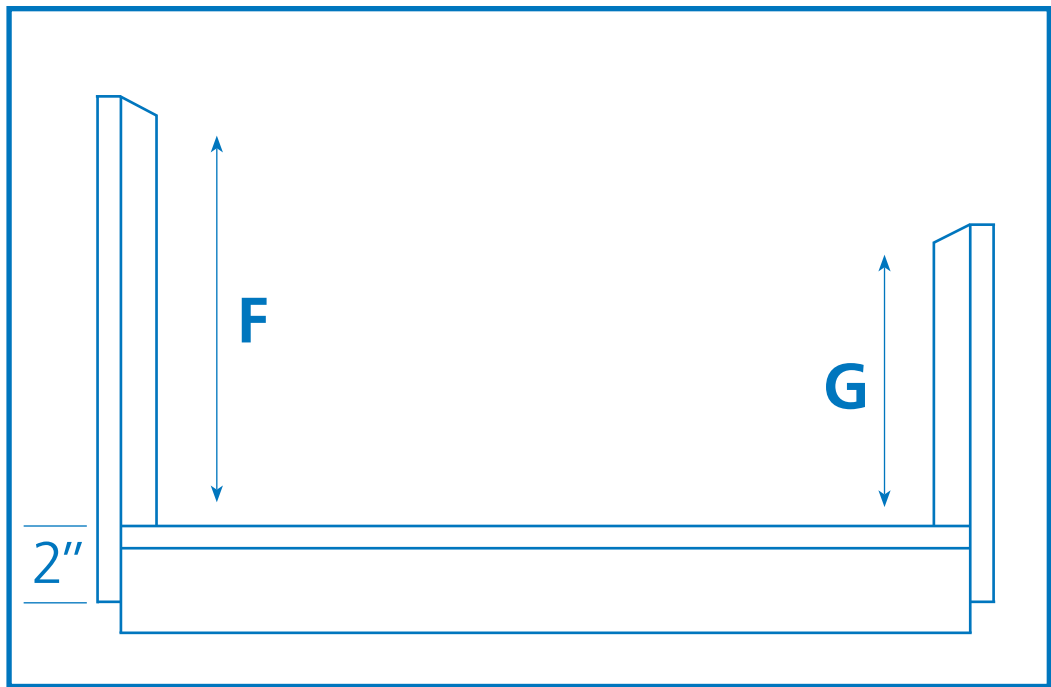
### Side View of Base ¾" Plywood



### Front View of Doghouse With Door Cut-Out



### Front View of Doghouse With High Side and Low Side Mounted to Base



Each doghouse is filled with soft straw bedding to keep the dogs dry and as warm as possible on the coldest winter days.

PETA's doghouses come in three different sizes to accommodate the needs of individual dogs.

#### Small Doghouse

- A. 24" wide
- B. 2" x 2" cross brace
- C. 2" x 4" beams cut 26" long

#### Medium Doghouse

- A. 30" wide
- B. 2" x 4" cross brace
- C. 2" x 6" beams cut 30" long

#### Large Doghouse

- A. 32" wide
- B. 2" x 4" cross brace
- C. 2" x 6" beams cut 32" long

The roof is made from ¾" plywood and has a 3" overhang on the high side and the low side. It has a 6" overhang on the door side and a 3" overhang on the back.

- D. Total door height of 12"
- E. Total door width of 10"

- D. Total door height of 14"
- E. Total door width of 11"

- D. Total door height of 16"
- E. Total door width of 12"

Notice the angle made by the 2" x 4" vertical bracing and the 2" overlap on the base.

- F. High side interior height of 25"
- G. Low side interior height of 20"

- F. High side interior height of 30"
- G. Low side interior height of 25"

- F. High side interior height of 32"
- G. Low side interior height of 27"



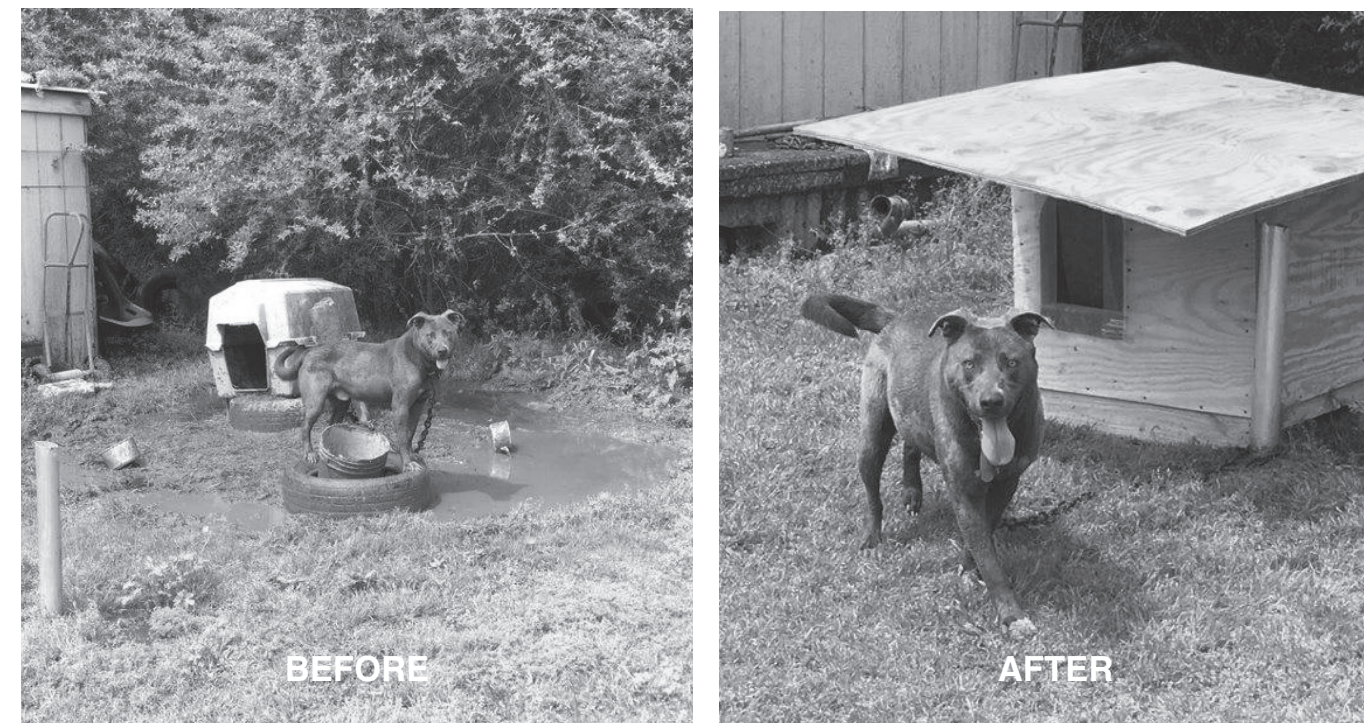
# The Doghouse You Sponsor Will Change a Life

PETA's doghouses come in three different sizes in order to accommodate the needs of individual dogs.

PHOTOS: © PETA



**Tiger** looked so unhappy in his lonely backyard with just a cramped plastic crate for a house. We replaced his inadequate shelter with a cozy, custom-built PETA doghouse. Look at his face now—he loves his new home!



Not only was **Shaq's** shelter inadequate, it was also ill-placed—right in front of a mud hole! Our fieldworkers provided him with a proper doghouse and moved him to a nice, clean area of the yard, where he can strut about without getting his paws dirty.



**Priest** was chained to a stake in a backyard. His only shelter was a too-small, plastic doghouse that, from the looks of his “before” picture, his chain was too short to reach. PETA brought him a brand-new doghouse and replaced his heavy, tangled chain with a lightweight tie-out that allows him easy access in and out of his new digs.



## PETA custom-builds these sturdy doghouses.

For many of the dogs we help, ours is the first adequate shelter that they've ever had. Of course, nothing can replace a warm and loving indoor home for lonely “backyard dogs,” but our doghouses are custom-designed to ensure that, at the very least, these vulnerable pups are protected from the elements throughout the year.