

How to Document Betta Fish Conditions

Note: If an animal is in urgent need of veterinary care, please alert the store manager right away. If no help is offered, call your local animal control department.

Please submit your footage, along with a brief description of your visit (when and where it took place, what you found, etc.), to PETA at Petno@peta.org as soon as possible. Thank you!

Look for the following when documenting betta fish conditions:

- Low water levels
- Dirty water (contaminated with uneaten food, feces, algae, etc.)
- Rapid gill movement
- Lethargy
- Raised scales
- Fungus on the skin
- A curved spine
- A swollen or thin belly
- Inflamed gills
- Bulging eyes
- Open sores
- Discolored or fraying fins
- Difficulty swimming
- Floating on one side
- Anything else that appears to be abnormal

Examples of Clear vs. Unclear Documentation

CLEAR



This image is clear and close up, and the betta's

UNCLEAR



This image is blurry, and there's a glare

entire body and living conditions can be seen in it.

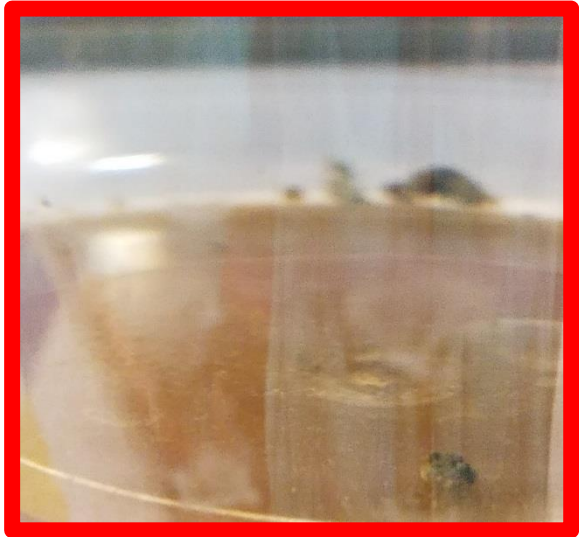
blocking the view of the fish. It's unlikely that you'll be able to completely eliminate all glare on the cup, but try to take the picture from an angle that results in as little of it as possible.

CLEAR



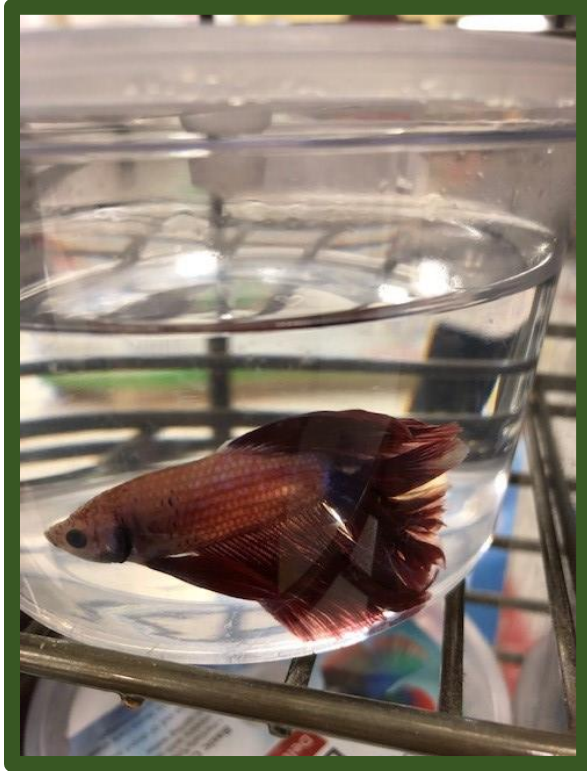
This image is clear and close up, and both the fish and the filth at the bottom of the container can be seen in the shot.

UNCLEAR



This shot shows how filthy the container is, but it's difficult to tell that it's a cup containing a fish. Try to show the animal in context whenever possible.

CLEAR



This image shows the betta fish front and center with minimal distortion.

UNCLEAR



This image was taken from an angle at which the water caused a distortion, and it's difficult to see the fish. Try repositioning the camera at an angle that reduces distortion and allows the entire fish to be seen.

CLEAR



This image shows the full betta fish display with some signage in the background.

CLEAR



This image is from the same betta fish display, but it's taken from a wider angle and shows the configuration of the cups. Try to capture both the entire display and close-ups of the individual cups.