

# 'A Dog's Life':

## Main Idea and Supporting Details Sort

### Teacher Directions

Cut out all the cards and mix them up. Have students read the "A Dog's Life" comic and then use the text to match each main idea card with the supporting detail cards.

### Main Idea 1

When Molly was a puppy, she lived indoors and was treated like part of the family.

### Main Idea 2

Molly was left at home alone all day, and her needs weren't met.

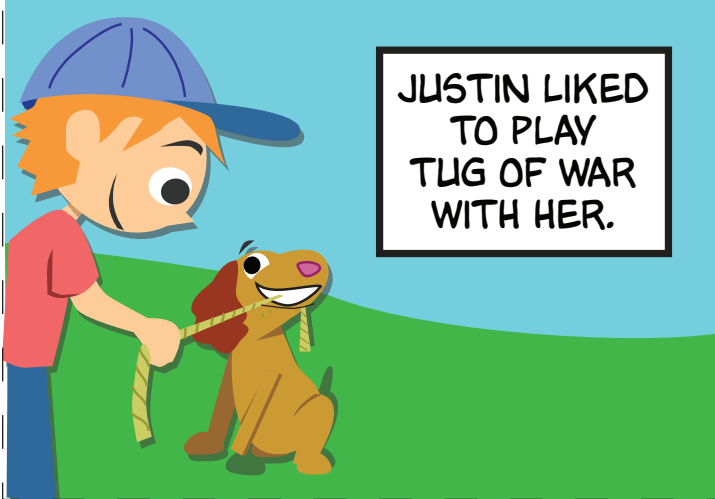
### Main Idea 3

Molly was miserable living outdoors, constantly chained.

### Main Idea 4

The kids got Molly and her puppies the help that they needed and deserved.

## Supporting Detail



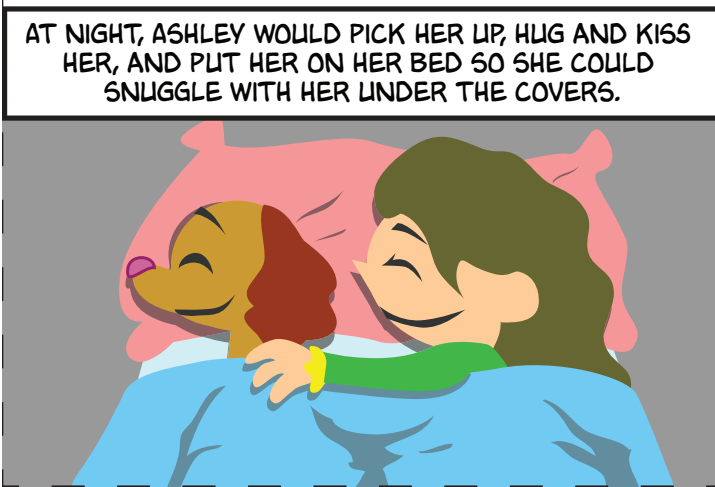
JUSTIN LIKED TO PLAY TUG OF WAR WITH HER.

## Supporting Detail



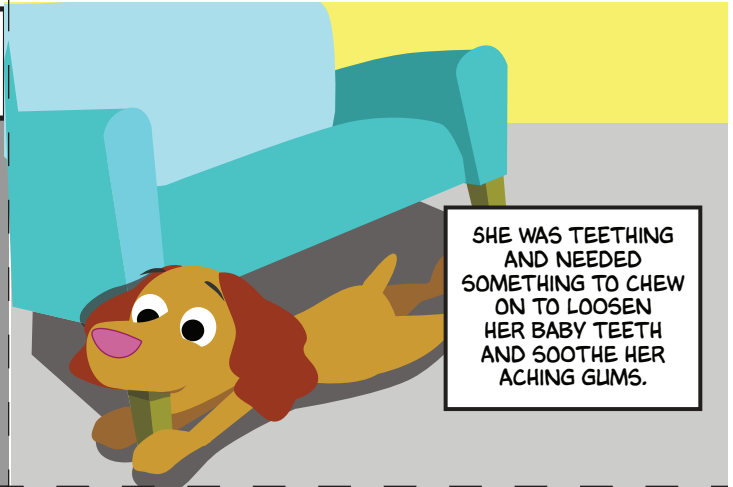
HE WOULD THROW A TENNIS BALL AND LAUGH AS IT BOUNCED ALL OVER AND MOLLY HAPPILY CHASED AND TRIED TO CATCH IT.

## Supporting Detail



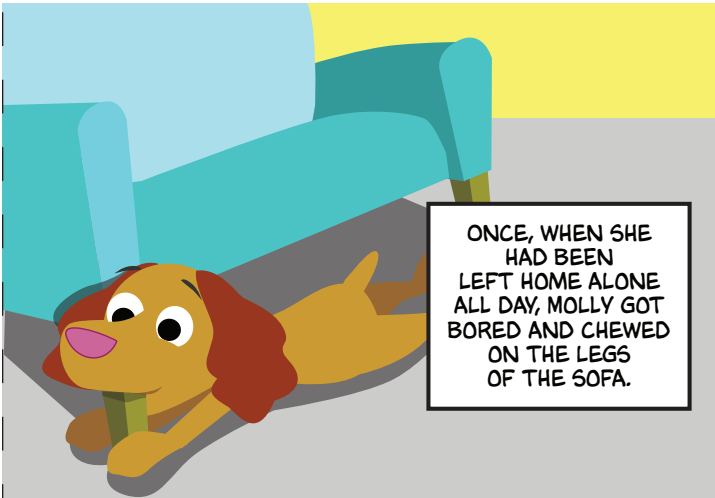
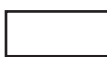
AT NIGHT, ASHLEY WOULD PICK HER UP, HUG AND KISS HER, AND PUT HER ON HER BED SO SHE COULD SNUGGLE WITH HER UNDER THE COVERS.

## Supporting Detail



SHE WAS TEETHING AND NEEDED SOMETHING TO CHEW ON TO LOOSEN HER BABY TEETH AND SOOTHE HER ACHING GUMS.

## Supporting Detail



ONCE, WHEN SHE HAD BEEN LEFT HOME ALONE ALL DAY, MOLLY GOT BORED AND CHEWED ON THE LEGS OF THE SOFA.

## Supporting Detail

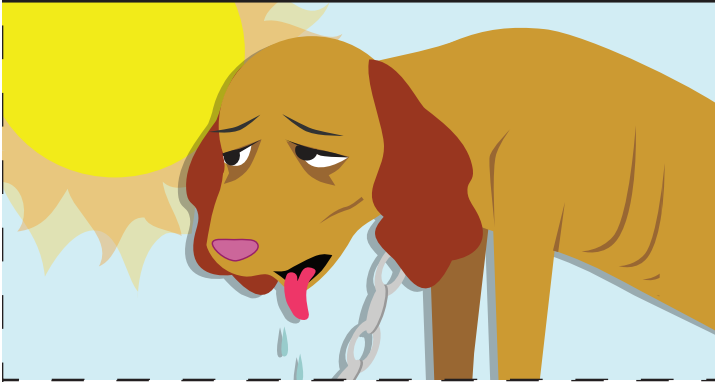


SHE DIDN'T REALIZE THAT HER FAMILY CONSIDERED THE COUCH FOR HUMANS ONLY—THOSE LEGS LOOKED SO TEMPTING! JUST LIKE THE STICKS JUSTIN WOULD THROW FOR HER IN THE YARD.

## Supporting Detail



MOLLY HAD FORGOTTEN HOW LONG SHE HAD BEEN OUTSIDE. ALL SHE REMEMBERED WAS BEING SO HOT IN THE SUMMERTIME THAT HER HEAD FELT LIKE IT WAS ON FIRE.



## Supporting Detail



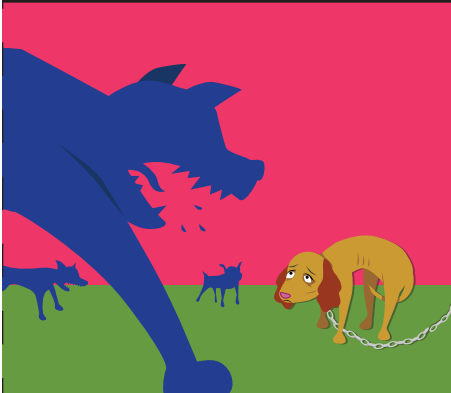
IN THE WINTER, SHE COULD NEVER GET WARM AND HAD NOWHERE TO SLEEP BUT THE COLD, HARD GROUND.



## Supporting Detail



SHE REMEMBERED THE TIME WHEN THE OTHER DOGS STARTED COMING AROUND. SHE DIDN'T UNDERSTAND WHY THEY WERE BOTHERING HER, AND SHE WISHED THEY WOULD GO AWAY.



SHE TRIED TO GET AWAY FROM THEM, BUT SHE COULDN'T—SHE HAD NOWHERE TO RUN OR HIDE.



## Supporting Detail



AFTER THAT, SHE REMEMBERED BEING HUNGRY ALL THE TIME. IT SEEMED LIKE NO MATTER HOW MUCH SHE ATE, SHE WAS STILL HUNGRY. THE COLD WEATHER MADE IT WORSE—SHE NEEDED EXTRA FOOD TO KEEP HER BODY WARM WHEN IT WAS COLD OUTSIDE.



## Supporting Detail



THE KIDS RAN TO RACHEL'S HOUSE AND TOLD HER MOTHER WHAT THEY HAD FOUND.



## Supporting Detail



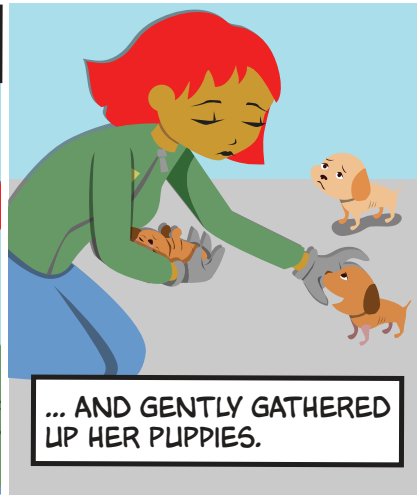
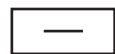
WHEN THE ANIMAL CONTROL OFFICER ARRIVED, SHE TOOK ONE LOOK AT THE PUPPIES AND AT MOLLY, WHOSE FOOD BOWL WAS EMPTY AND WHOSE WATER BOWL WAS FROZEN AND WHO HAD NOTHING BUT A PIECE OF PLYWOOD FOR SHELTER, AND KNEW IMMEDIATELY WHAT SHE HAD TO DO.



# Supporting Detail



# Supporting Detail



# 'A Dog's Life':

## Main Idea and Supporting Details Sort Answer Sheet

**Note:** Students can record the supporting details in any order.

**Main Idea 1:** When Molly was a puppy, she lived indoors and was treated like part of the family.

**Supporting Details:** ♡, ◻, ○

**Main Idea 2:** Molly was left at home alone all day, and her needs weren't met.

**Supporting Details:** ◻, △, ◻

**Main Idea 3:** Molly was miserable living outdoors, constantly chained.

**Supporting Details:** ◻, ⊙, ♡, ⊖

**Main Idea 4:** The kids got Molly and her puppies the help that they needed and deserved.

**Supporting Details:** ◻, △, ♡, ◻

Name \_\_\_\_\_ Date \_\_\_\_\_

## 'A Dog's Life': Main Idea and Supporting Details Sort Student Worksheet

**Directions:** Fill in the blanks with the shapes located on the supporting detail cards for each main idea.

.....

**Main Idea 1:** When Molly was a puppy, she lived indoors and was treated like part of the family.

**Supporting Details:** \_\_\_\_\_, \_\_\_\_\_, \_\_\_\_\_

**Main Idea 2:** Molly was left at home alone all day, and her needs weren't met.

**Supporting Details:** \_\_\_\_\_, \_\_\_\_\_, \_\_\_\_\_

**Main Idea 3:** Molly was miserable living outdoors, constantly chained.

**Supporting Details:** \_\_\_\_\_, \_\_\_\_\_, \_\_\_\_\_, \_\_\_\_\_

**Main Idea 4:** The kids got Molly and her puppies the help that they needed and deserved.

**Supporting Details:** \_\_\_\_\_, \_\_\_\_\_, \_\_\_\_\_, \_\_\_\_\_

