

‘A Chicken’s Life’:

Main Idea and Supporting Details Sort

Teacher Directions

Cut out all the cards and mix them up. Have students read the “A Chicken’s Life” comic and then use the text to match each main idea card with the supporting detail cards.

Main Idea 1

Charlotte had a miserable life inside a cage before she was rescued.

Main Idea 2

There were many things that Charlotte liked to do.

Main Idea 3

When Steve was a baby chick, the hatchery treated him like trash.

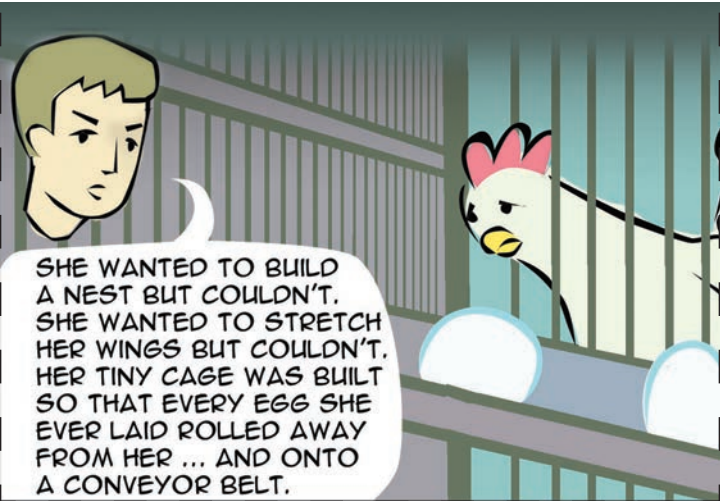
Main Idea 4

Humans can’t take care of baby chicks as well as mother hens can.

Supporting Detail



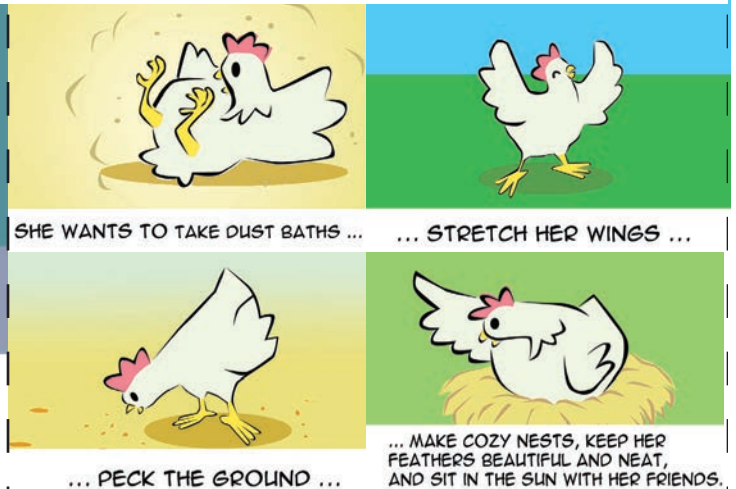
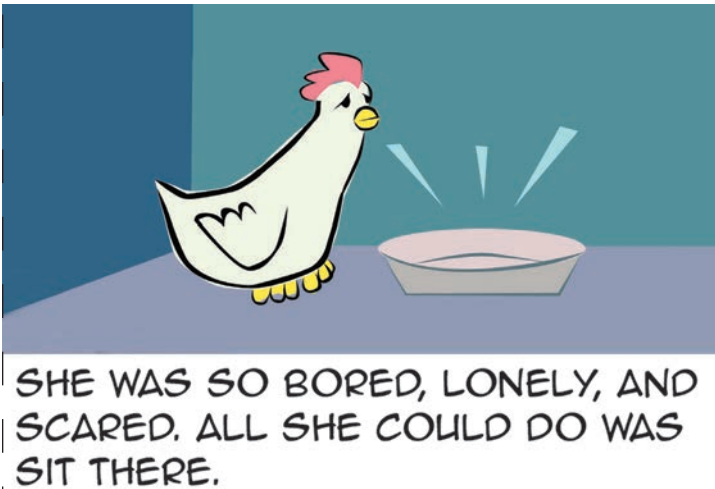
Supporting Detail



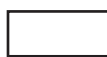
Supporting Detail



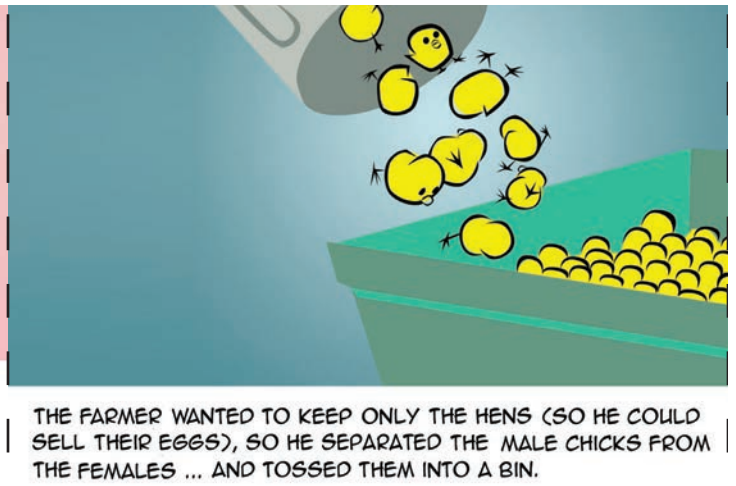
Supporting Detail



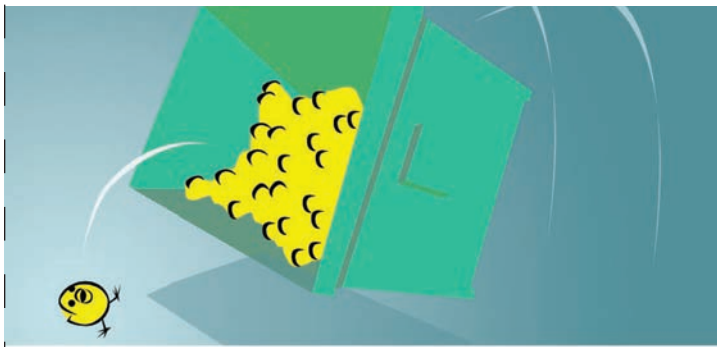
Supporting Detail



Supporting Detail



Supporting Detail



STEVE WAS ONE OF THEM. HE WAS SUPPOSED TO BE GROUND UP FOR FERTILIZER, BUT HE FELL OUT WHEN THE BIN TIPPED OVER.

Supporting Detail



SHE WAS THE ONLY CHICK WHO HATCHED IN A DUMB SCHOOL EXPERIMENT. THE SCHOOL DIDN'T KNOW WHAT TO DO WITH HER, SO THE TEACHER TOOK HER TO THE ANIMAL SHELTER.

Supporting Detail



‘A Chicken’s Life’:

Main Idea and Supporting Details Sort Answer Sheet

Note: Students can record the supporting details in any order.

Main Idea 1: Charlotte had a miserable life inside a cage before she was rescued.

Supporting Details: ♡, □, ⊙

Main Idea 2: There were many things that Charlotte liked to do.

Supporting Details: △, □

Main Idea 3: When Steve was a baby chick, the hatchery treated him like trash.

Supporting Details: □, ⊙

Main Idea 4: Humans can’t take care of baby chicks as well as mother hens can.

Supporting Details: ♡, △

Name _____ Date _____

'A Chicken's Life': Main Idea and Supporting Details Sort Student Worksheet

Directions: Fill in the blanks with the shapes located on the supporting detail cards for each main idea.



Main Idea 1: Charlotte had a miserable life inside a cage before she was rescued.

Supporting Details: _____, _____, _____

Main Idea 2: There were many things that Charlotte liked to do.

Supporting Details: _____, _____

Main Idea 3: When Steve was a baby chick, the hatchery treated him like trash.

Supporting Details: _____, _____

Main Idea 4: Humans can't take care of baby chicks as well as mother hens can.

Supporting Details: _____, _____

